

Data sheet – VITROInsertX

1 Product identification

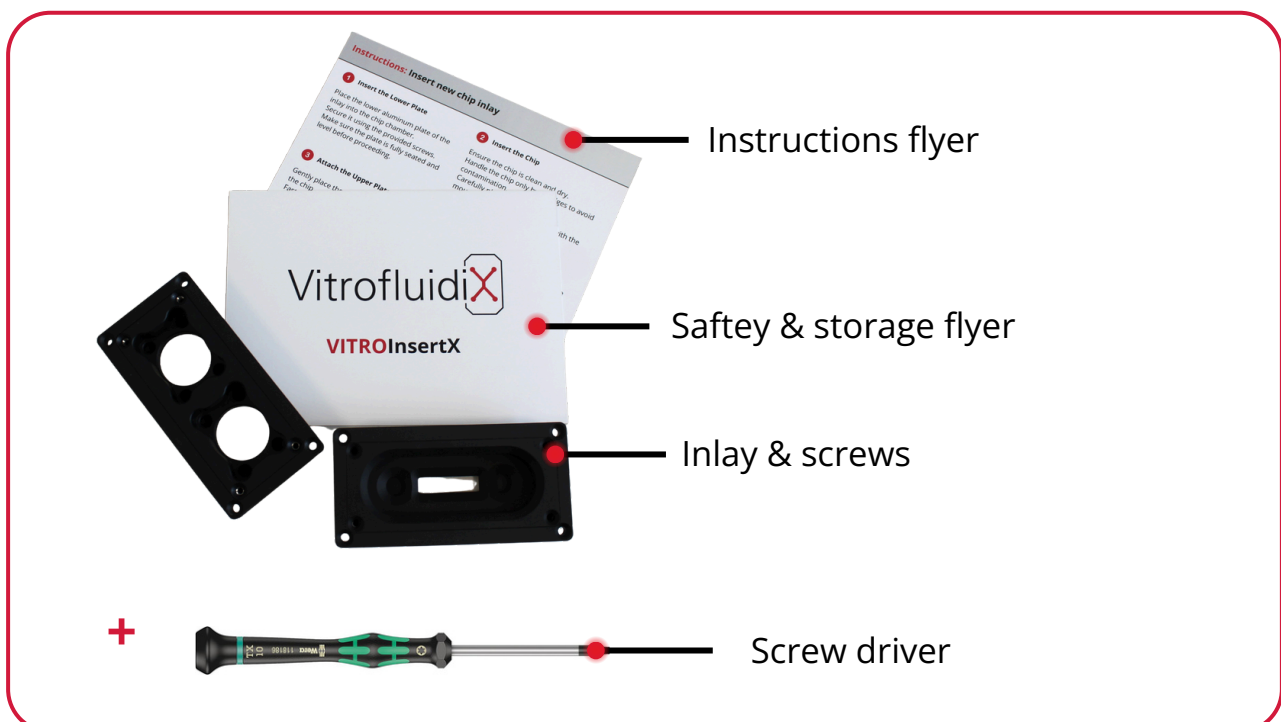
Product name	VITROInsertX
Product code / item number	VK-IX
Version / revision	v1.0
Manufacturer / distributor:	VitrofluidiX GmbH

2 Product description

The VITROInsertX is a modular insert system designed to enable the integration of microfluidic chips into VitrofluidiX VitroFlow systems.

The system consists of an upper and lower inlay component, specifically designed for defined chip geometries. It allows secure positioning, alignment, and interfacing of chips within the system.

The kit includes all necessary components for installation and is intended to ensure reliable and reproducible operation of chip-based applications.



Component name	Quantity
Upper inlay	1
Lower inlay	1
Screws	1 set
Screwdriver	1
Instructions flyer	1
Safety & storage flyer	1

3 Intended use

This product is not a medical device.

The product is intended for:

- technical/internal laboratory use
- integration and fixation of microfluidic chips in VitrofluidiX systems
- enabling standardized chip positioning and interfacing
- non-clinical, non-diagnostic applications

The product may only be used:

- within VitrofluidiX VitroFlow systems
- with compatible chip formats

4 Materials & composition

Component	Material	Special features
Upper inlay	Polymer (e.g. CNC / 3D printed)	Chip-specific geometry
Lower inlay	Polymer	Mechanical support and alignment
Screws	Metal	Secure fixation
Screwdriver	Metal + polymer	Installation tool

Component	Material	Special features
Packaging	Plastic / paper	Clean and protected storage
Flyers	Paper	User guidance & safety instructions



Additional information:

- Inserts are designed specifically for defined chip geometries
- For new chip types, development and validation may be required
- Selection of insert depends on: chip dimensions, connection layout, application requirements

5 Technical informations

Kit-level	
Insert type	Chip-specific inlay system
Configuration	Upper + lower inlay
Fixation method	Screws
Tool included	Screwdriver
System integration	
Function	Chip positioning and fixation in chip chamber
Compatibility	VitroFlow system
Customization	Required for new chip designs



6 Safety instructions

- Only use the product for its intended purpose
- Read the instructions flyer before use
- Ensure correct assembly before operation
- Improper installation may result in leakage or misalignment
- Do not overtighten screws
- No warranty in case of misuse or modification

7 Storage & transport

- Store at room temperature
- Store in a dry place away from direct sunlight
- Keep in original packaging until use

➡ For details, see the Safety & Storage Flyer.

9 Compatibility & regulatory status

- The product is intended for use with:

➡ VitrofluidiX VitroFlow systems

No guarantee of functionality when used with non-approved systems.

This product includes components sourced from qualified external suppliers.

These components are manufactured under certified quality management systems.

VitrofluidiX GmbH performs final product assembly, packaging, and quality control.

- Applicable law: General product safety law

10 Handling & operation

The product must be handled in accordance with the provided instructions.

- Insert the chip into the designated inlay geometry
- Assemble upper and lower parts correctly
- Fix components using the provided screws
- Ensure proper alignment and sealing before operation

Important:

- Incorrect positioning may lead to:
- leakage
- unstable flow
- experimental errors

Reference:

Operating instructions VitroFlow

11 Liability & responsibility

VitrofluidiX GmbH accepts no liability for:

- use outside the defined intended purpose
- improper handling or installation
- modification or misuse of components
- combination with non-approved products



info@vitrofluidix.com



linkedin.com/company/vitrofluidix



vitrofluidix.com



Gottfried-Hagen-St. 60-62, 51105 Cologne